

## NEWS AND VIEWS

I realize that it may seem odd to express it this way, but the winter is definitely "funeral season." Without question, more people, especially the elderly, die during the winter months. Hopefully you will not find this column too grim as I raise the question of **where a funeral should be held.**

For our members and their families, I invariably suggest that the funeral or memorial service should be held at the Temple. Many times this suggestion is met with a surprised look because many are of the belief that one must be an especially notable person for the funeral to be held in the synagogue. Unfortunately, this has been true in many congregations, but not at Chicago Sinai Congregation. Here we adhere completely to the principle of democracy, that all are welcome and all are equal. The quotation on the front of our lovely Temple says it all: **"My house shall be a house of prayer for all people."**

There is no reason why we should think of the Temple only as a place for happy occasions. It is meant to be a house of prayer **for all the seasons of our lives.**

It is true that our community has several funeral homes that serve the Jewish community and also many others that also assist Jewish families from time to time. Of course, these are the people with whom one makes funeral arrangements. Many also have fine facilities. However, only the synagogue can be called a true Jewish house of worship. **I can think of no higher honor to confer upon our beloved than to mourn their loss within the beauty and dignity of the synagogue.**

I am well aware of the logistical considerations, particularly our lack of parking. However, there is an abundance of parking nearby. All of us are well accustomed to looking for parking or taking other forms of transportation whenever we are in the city.

Thankfully, funerals are such rare occurrences for most people that the necessity of finding parking imposes no great burden. There is also the matter of the funeral procession to the cemetery. Increasingly, these are things of the past. Whenever the service is held at the Temple, the funeral directors print a map and give instructions for when we will assemble at the cemetery, and everyone is then free to get there on their own, which is much safer than a cortege.

All of us at Sinai are committed to providing the highest caliber of service to our members, particularly in times of sorrow. It is our privilege to help you, a mitzvah actually. Most important of all, **Sinai is your spiritual home.** I encourage you to keep this in mind whenever that sad need should arise.

Shalom,  
Rabbi Michael P. Sternfield

**For information on Sinai's Community Concerns Fund for Haitian Relief please see page 4.**

## WORSHIP SERVICES

**Friday, February 5, 6:15 p.m.**  
SHABBAT EVE SERVICE  
Rabbi Sternfield will conduct the service

**Sunday, February 7, 11:00 a.m.**  
FAMILY TORAH SERVICE

**Friday, February 12, 6:15 p.m.**  
SHABBAT EVE SERVICE  
Rabbi Levinsky will conduct the service

**Sunday, February 14, 11:00 a.m.**  
WORSHIP SERVICE  
NO RELIGIOUS SCHOOL  
NO CONFIRMATION CLASS

**Friday, February 19, 6:15 p.m.**  
SHABBAT EVE SERVICE  
Rabbi Levinsky will conduct the service  
The Tot Shabbat service will begin at 5:30 p.m.

**Sunday, February 21, 11:00 a.m.**  
WORSHIP SERVICE  
Sundays at Sinai Torah Service

**Friday, February 26, 6:15 p.m.**  
SHABBAT EVE SERVICE  
Rabbi Levinsky will conduct the service

**Sunday, February 28, 11:00 a.m.**  
FAMILY PURIM SERVICE  
followed by the Purim Carnival  
See page 6 for more information

*SHABBAT MORNING TORAH STUDY meets Saturdays at 9:30 a.m. in the library. SUNDAY MORNING ADULT EDUCATION CLASS meets Sundays at 9:45 a.m.*

### IN THIS ISSUE

Rabbi Sternfield/Worship Services	1
Rabbi Levinsky/Special Events	2
Special Programs/Library	3
Sundays/Study/Outreach	4
Cinema/Books/Volunteer/Mitzvah	5
Purim Celebration	6
For Children/Passover Seder	7
Social Action	8
Nominating Committee	9
Frequently Asked Questions	10
Committees/Trustees	11
Religious Education	12
Preschool/In the Lives...	13
Tributes	14
Calendar	15
Mitzvah Weekend	Back

## Reflections from Rabbi Levinsky

### The Young Professionals Group at Sinai

In December, the Young Professionals Group at Sinai Congregation got together for its first meeting during my tenure at the

Temple. It was a great success. We met at a local gathering spot, Rockit, for drinks and conversation. We had a fantastic turnout and I was able to make a connection with a number of young congregants and non-congregants, talking about Judaism and the role it plays in their lives.

On the first Shabbat in January, we had our second event—the Young Professional Group Shabbat. After Friday night services, the Young Professionals met and mingled over an oneg sponsored by the group. Future events include volunteering at a soup kitchen in the Uptown neighborhood of the city.

The credit for these events goes to the committee of young Sinai members responsible for their planning and organization. **Jeff Becker, Carrie Baker** and **Sarah Samuels** showed a huge amount of commitment and effort in getting this program out of the planning stages and into reality. **I owe them a hearty thank you.**

For a number of reasons, young adults are often under served by congregations. Because new membership is often driven by the religious school and b'nai mitzvah, congregations focus upon families. Since young adults are marrying later, and starting families later, many of them fall between the cracks. They are too old to participate with their parents and too young to have started their own families.

Additionally, young adults increasingly face an unstable employment market. Even before the great recession, many young adults worked as the “serial employed,” moving from job to job with no real continuity. Others work as contract labor, shifting to different work sites for short term periods. Still others work three, four, even five jobs just to make ends meet in the city. The synagogue and its community can offer a welcome reprieve from these difficult realities. (For more on these two topics see Robert Wuthnow, [After the Baby-Boomers: How Twenty and Thirty Somethings Are Shaping the Future of American Religion](#), pp. 20-49.)

It's vitally important that Chicago Sinai Congregation respond effectively to these phenomena—changes in demographics and changes in the labor force. Not only because our commitment to social justice demands us to open our doors to the next generation, but because **youth can be an invigorating force in any religious congregation**. It's a cliché, but it's also true—the **youth are the future**.

Youth do not guarantee a vital synagogue community. **We still have to ask ourselves what is the future of Judaism and what is my role in that future?** We still have to create religious ideas, practices, and experiences that speak to today's world and connect us to the divine. I am happy that Chicago Sinai Congregation and its Young Professionals Group are striving together to reach these goals.

## Special Event in March

### HASHA'NA RABBAH in CASALE MONFERRATO (1733) Sunday, March 14, 11:00 a.m.

Immediately following our abbreviated worship service on Sunday, March 14th, 11:00 am, Chicago Shir Ziyon will present a performance of the Italian baroque Hebrew oratorio Elyon, Melits u-Mastin (God, Clemency and Punishment). The Hebrew libretto by S.H. Jarach is an allegorical story whereby the figures of Clemency and Punishment present their cases for the Fate of humankind as the “Book of Life” is sealed for the coming year. Clemency turns out to be more persuasive than Punishment, and the oratorio fittingly concludes with a rousing chorus of Lekhu Nerannenah (Come, let us sing unto God). The music is a pasticcio featuring works by several composers including Joseph Hayyim Chezighin (a.k.a. Giuseppe Vita Clava), Riccardo Broschi, and Anonymous (possibly Vivaldi, Handel, or others). The performance will also include liturgical music connected with Hasha'na Rabbah, specifically metrical settings of Adon Olam, and a Zemirot.



Three vocal soloists will be featured: **Farida Weller**, soprano; **Lon Ellenberger**, countertenor; and **Andrew Schultze**, Sinai's own bass-baritone. **Jason Moy** will be the harpsichordist, and the **Lincolnwood Chamber Orchestra** will supply the small instrumental ensemble of recorder and strings. The chamber orchestra's founder and artistic director, **Philip Simmons**, will conduct.

Please mark your calendars and plan to join us for a delightful and edifying morning filled with beautiful music. All are welcome!

## Save the Date!

### 2010 Sinai Celebration Saturday, May 15

The 2010 Celebration will be held at the Chicago History Museum. If the weather permits, we will enjoy cocktails in the garden followed by dinner in the ballroom. We will dance to the music of The Bobby Schiff Band and will have access to the exhibits on the second floor of the Museum. The mitzvah recipient will be the Jenner School.

# Special Programs

## LADIES & GENTLEMEN AT LEISURE: A PROGRAM FOR ADULTS 65+

Ladies & Gentlemen at Leisure will meet on Thursday, **March 18** at noon in the Social Hall. Lunch will be served followed by a speaker. The speaker and topic will be announced on our web site, [www.chicagosinai.org](http://www.chicagosinai.org). To make a reservation please call the Temple office.

## CJE SENIOR LIFE

Enrollment is now open for the CJE SeniorLife older adult day activity program at Chicago Sinai Congregation. The program called "CJE at Sinai" meets each Monday and Thursday. It offers stimulating activities and socialization for men and women who have mild to moderate memory loss. The five hour day includes a morning snack and lunch, and engages participants in a variety of creative, interactive programs including music, art, drama, poetry, current events, dance, exercise, cognitive enhancement games and much more. "CJE at Sinai" also provides two days of respite for caregivers. It is staffed by professionals from CJE SeniorLife Adult Day Services in Evanston and trained volunteers. Enthusiastic participants have said: "I love every minute of it." "I like belting out a song now and then." "I like the opportunity of getting to meet new people." "I like it more than anything else."

For cost and enrollment information, please contact Sheri Wishnia, Program Manager at 847.556.8406 [Sheri.Wishnia@cje.net](mailto:Sheri.Wishnia@cje.net) or Judy Holstein, Director of Adult Day Services at 847.556.8405 [Judy.Holstein@cje.net](mailto:Judy.Holstein@cje.net).

CJE SeniorLife is a partner in serving our community, supported by the Jewish United Fund/Jewish Federation. CJE SeniorLife strives to maximize the lives of older adults regardless of religion, gender, race, color, handicap, familial status or national origin.

## YOUNG PROFESSIONALS GROUP

The Young Professionals Group (YPG) is planning an event at Uptown Cafe, which provides hot meals in a dignified, restaurant-style setting to those in need. YPG will be serving meals on Thursday, **March 11 from 5:30 to 7:30 p.m.** There are only 12 volunteer slots available, so please email [CarrieLeeBaker@gmail.com](mailto:CarrieLeeBaker@gmail.com) if you would like to participate. The first 12 RSVPs received will be sent an email confirmation. Please note the clients at Uptown Cafe are relying on us to serve the meals, so if you RSVP and receive an email confirmation, it is important that you attend. After our service is done, YPG will take the volunteers out to dinner so participants can mingle and get to know each other. The JUF Uptown Cafe is located at 909 W. Wilson, Chicago.

## BRIDGE CLASSES AT SINAI

The *Beginning Bridge I* class covers the fundamentals of basic bridge. You will learn the three aspects of the game: bidding, play and defense. This course is designed to get you to play and enjoy bridge in a friendly environment. The class meets on Thursday afternoons from **1:00 p.m. to 3:00 p.m.** on **February 4, February 11, February 18, February 25 and March 4**. The cost is \$25 per class. The text is *Beginning Bridge I* by Audrey Grant which is available for \$10. For more information or to register e-mail Ellen and Rich Gabriel at [msbid@rcn.com](mailto:msbid@rcn.com) or call them at 312.337.0886 or 312.590.3169.

The *Bridge II: Competitive Bidding* class covers overcalls, takeout doubles, negative doubles, pre-empts, and other subjects of competitive bidding. This class is designed for those who have completed Beginning Bridge I and for those wanting to learn some of the more intricate aspects of the game. There will be one hour of instruction and one hour of play of hands relating to the subject matter. The class meets on Wednesday evenings from **6:30 p.m. to 8:30 p.m.** on **February 3, February 10, February 17, February 24 and March 3**. The cost is \$25 per class. The text is *Beginning Bridge II* by Audrey Grant which is available for \$10. For more information or to register e-mail Ellen and Rich Gabriel at [msbid@rcn.com](mailto:msbid@rcn.com) or call them at 312.337.0886 or 312.590.3169.

## NEWS FROM THE LIBRARY AND ARCHIVES

Look for these new books now available in the Sinai's libraries. Unless noted, books are available in the Davis Memorial Library on the second floor.

**Classic Italian Jewish Cooking** by Edda Servi Machlin – A collection of Italian Jewish recipes, including a history of Italian Jewish cuisine.

**GI Joe** by James L. Franklin – A biography of Sinai member Dr. Joseph B. Kirsner and his leading role in medicine and the field of gastroenterology.

**Julia's Kitchen** by Brenda A. Ferber (YOUTH) – The story of an 11 year old girl who struggles with her grief after her mother and sister are killed in a fire.

**Matzoh Ball Gumbo** by Marcie Cohen Ferris – The history of evolution of Jewish cooking in the South with recipes from New Orleans to Savannah.

**Missing Persons** by M.E. Rabb (YOUTH) – A series of four young adult books featuring two teenage Jewish girls from Queens solving missing person cases as they hide in Venice, Indiana.

**Suite Francaise** by Irene Nemirovsky – A critically acclaimed fictional account of life in French society during the Nazi occupation.

Temple Office 312.867.7000  
[www.chicagosinai.org](http://www.chicagosinai.org)

## Sundays at Sinai

### Family Torah Service, Sunday, February 7

Each year we dedicate a Family Service to a closer examination of our Torah Scroll. Families see the scroll "close-up" and learn about the customs and traditions associated with our most sacred text.

### Torah Sunday, February 21

The Torah service will include a lay member reading an abbreviated Torah portion and another lay member giving a "d'var Torah" – a sermon on what the portion means to them.

### Family Purim Service, February 28

See Page 6 for more information.

Sundays at Sinai begin at **11:00 a.m.** and conclude by 12:15 p.m.

## Haitian Relief

The Chicago Sinai Social Action Community Concerns Fund is donating 50% of our 2009-2010 emergency reserve to American Jewish World Service (AJWS) for Haiti relief. [www.ajws.org](http://www.ajws.org)

Our thoughts and prayers go out to the people and families in Haiti during this time of crisis. We have researched the most efficient way to provide aid and relief to the people of Haiti and recommend you consider the following actions if you would like to make a donation.

We strongly urge you to make a donation to the Chicago Sinai Community Concerns Fund for Haiti Relief and we will forward the funds immediately to the appropriate relief agency.

Since there are great complexities associated with the collection and transport of relief items to Haiti (medical, water, shelter, etc.), we strongly recommend that you choose one of the following charities—or the charity of your choice—and donate cash only at this time. These relief organizations have the processes in place to most effectively get the proper relief items to the people of Haiti. All of these organizations have set up specific relief funds for Haiti. **At a later date, when we have a list of physical items which may be collected, the Social Action committee will notify the Temple membership and organize a collection effort.** We recommend you consider the following organizations, but please feel free to choose the relief organization of your choice.

<http://urj.org/socialaction/issues/relief/haiti>, or [https://secure.ajws.org/site/Donation2?df\\_id=3460&3460\\_donation=form1](https://secure.ajws.org/site/Donation2?df_id=3460&3460_donation=form1), or [http://american.redcross.org/site/Page-Server?pagename=ntld\\_main&s\\_subsrc=RCO\\_ResponseStateSection](http://american.redcross.org/site/Page-Server?pagename=ntld_main&s_subsrc=RCO_ResponseStateSection), or <http://www.supportunicef.org/site/pp.asp?c=9fLEJ-SOALpE&b=1023561>

Thank you for your concern and your support.

## Study and Outreach

### SUNDAY MORNING STUDY

Join Rabbis Sternfield and Levinsky this year as they discuss "**Is the Bible Still Relevant Today?**" No pre-registration is necessary. Everyone is welcome to attend. Classes will meet on **February 7, 14 and 21** at 9:45 a.m. in the second floor meeting room. There will be no class on **February 28**.

### SHABBAT MORNING PRAYER AND TORAH STUDY

Join in a discussion of the week's Torah reading on Saturday mornings. A brief worship service will begin at 9:30 a.m. followed by Torah study with Rabbi Levinsky. Everyone is welcome and no prior knowledge or experience is required. Feel free to come to one or both events.

### WEDNESDAY ADULT EDUCATION WITH RABBI STERNFIELD

Join Rabbi Sternfield on Wednesday mornings from 8:00 a.m. to 9:30 a.m. **to study the linear translation of both the Torah and Rashi.** Through open dialogue we will develop a deeper understanding and appreciation for the sophistication of Rashi, a great medieval sage. **You are welcome to join us before class at 7:30 a.m. for our Wednesday worship service** led by members of the class. The Rashi class will meet on **February 3, 10, 17 and 24** in the second floor meeting room. The **February 10, 17 and 24** classes will be taught by Rabbi Larry Edwards.

### THURSDAY ADULT EDUCATION WITH RABBI LEVINSKY

Join Rabbi Levinsky on **Thursdays at noon for a tour through the best parts of the Book of Judges.** The book tells of a period of relative anarchy in the Land of Israel and is rife with violence, complex gender roles and beautiful poetry. The text will be read with an eye towards relevance in the contemporary world and an ear toward vibrant discussion. The Judges class will meet on **February 4, 11, 18 and 25** in the second floor meeting room.

### INTRODUCTION TO JUDAISM

Sinai offers this class, free of charge, for **anyone who wants to learn more about Judaism.** The class meets on **Thursdays from 7:00 p.m. to 8:30 p.m.** in the Social Hall. The class is taught by our Rabbis. On **February 4** the topics will be Jewish Views on Marriage, Divorce and Reproductive Issues, on **February 11** the topics will be Brit-Milah (circumcision), Baby Namings, Adoption, Raising a Jewish Child and Bar/Bat Mitzvah. The last class will be held on **February 18**.

### SINAI OUTREACH PROGRAM

Conducted by our Rabbis, the Sinai Outreach Program is **intended for interfaith couples and is open to both members and non-members.** Outreach begins at 12:30 p.m. and concludes by 2:00 p.m. Classes meet in the second floor Chapel. On **February 21** Rabbi Levinsky will lead a discussion of "Teaching your (future) children Jewish values/Christian values/Human values." Join us on **March 23** for our annual Interfaith Seder.

### SINAI BOOK CLUB

Join fellow congregants for a monthly exploration of both fiction and non-fiction books of Jewish interest. On **February 9** we will discuss **The Wicked Son** by David Mamet and on **March 9** we will discuss **A Tale of Love and Darkness** by Amos Oz and Nicholas deLange. Mark your calendars to join us at **3:00 p.m.** in the library on the second floor. Please call the Temple office to register for these stimulating discussions.

### SUNDAY BOOK REVIEW GROUP

The Sunday Book Review Group meets at **12:30 p.m.** after the Sunday morning worship service in the Library on the second floor. The group will meet on **February 21** to discuss **The Lost: A Search for Six of Six Million** by Daniel Mendelsohn. The discussion will be led by Beth Lisberg-Najberg and on **April 18** to discuss **The I.L. Peretz Reader** edited by Ruth R. Wisse. The discussion will be led by Barbara Flaxman.

### INTERNATIONAL JEWISH FILM SERIES

Once a month we will watch and explore a film that focuses on themes that are both morally profound and engage issues of contemporary or historical Jewish concern. On Wednesday, **February 17** the evening begins at **6:00 p.m.** with dinner and an introduction to the series **The Goldbergs** a domestic comedy-drama about a struggling Jewish family in New York city that aired from 1949 to 1956. A discussion follows and the evening usually ends by 8:30 p.m. The cost of dinner is \$10. To make a reservation please call the Temple office.

### FILM REVIEW SERIES

Join us on Thursday, **February 4** at **7:00 p.m.** as Zbigniew Banas, a former movie critic for *The Reader*, leads a discussion of **Crazy Heart** starring Jeff Bridges, Maggie Gyllenhaal and Robert Duvall. Rodger Ebert has given the film 4 stars. Participants should view the movie in the theatre and meet to discuss the film at Sinai. The group will meet in the Library on the second floor. The cost of \$10 per person includes dessert. To make a reservation please call the Temple office.

### SECOND SUNDAY LUNCH PROGRAM

On the second Sunday of every month we make bag lunches to donate to the Greater Bethlehem Healing Temple. Bag lunches include a sandwich, juice box, packaged bag of chips and packaged dessert. We are committed to donating 200 bag lunches on each second Sunday. If you would like to donate bag lunches please drop them off at the Temple **no later than 10:00 a.m. on February 14.**

### SUPPER AT FOURTH PRESBYTERIAN CHURCH

We continue our commitment to help feed the homeless by cooking and serving dinner at Fourth Presbyterian Church. Eight volunteers (16+ years old) are needed. To sign up please email Merle Terry at [Mterry1013@aol.com](mailto:Mterry1013@aol.com). Upcoming dates are **February 21 and March 21.**

On the second Monday of every month we invite you to join us as we help Fourth Presbyterian Church serve dinner at Catholic Charities, 721 North LaSalle Street. Eight volunteers are needed from 3:30 p.m. until 6:15 p.m. To sign up please email Eva Farkas at [eva.farkas@sbcglobal.net](mailto:eva.farkas@sbcglobal.net).

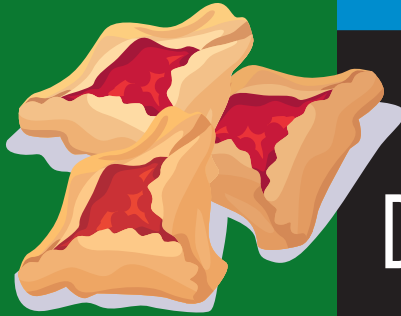
### JENNER SCHOOL - VOLUNTEERS (STILL) NEEDED

Our "Sinai Schools Initiative" is well underway at Jenner School, located at 1119 North Cleveland. **With a great core group of volunteers we are donating both time and resources to help the students and teachers.** Volunteers have been placed in classrooms as aides, assisting the teachers with reading, writing, math and classroom decorum. Volunteers have also been assigned to one-on-one tutoring with students needing reading enrichment for all grade levels. More volunteers are involved in both student mentoring and others are assisting with special projects, including field trips and after-school programs. The need is bottomless and many more volunteers are needed. For more information or to volunteer, please contact Jill Peters at [jillpeters@rcn.com](mailto:jillpeters@rcn.com) or Mike Mannis at [mmannis@aol.com](mailto:mmannis@aol.com).

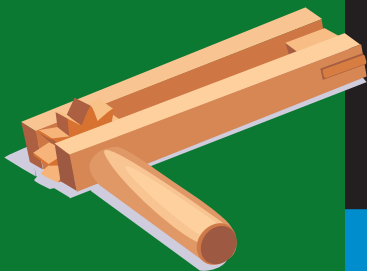
### THE LINUS BLANKETS PROJECT

The Linus Blankets Project from Mitzvah Weekend has been such a success that we want to continue the fun and *mitzvah* during the year. Join us to make fleece blankets which will be distributed to local shelters. Bring your own dinner and drinks and we will supply the dessert. **Adults only please.** We will meet one Thursday a month beginning at 6:00 p.m. Upcoming dates are **February 18 and April 15.** For more information please contact Ellen Schor at 773.975.7227 or Cheryl Segal at 312.617.7965.

# Grease: The Megillah



Don't miss  
the Family  
Purim  
Celebration  
and  
Megillah  
Reading



Written by Norman Roth (2007)  
Adapted by Scott Kumer & Heidi Kon (2010)

**Sunday, February 28 at 11:00 a.m.**

This joyous and festive event, complete with a parade of all of our Religious School students in their costumes, is a beloved Sinai tradition. Everyone is welcome to attend. Costumes for all are encouraged!

Join us for the Purim Carnival  
from 12:00 to 1:30 p.m. in the Social Hall

**\$50 Family Pass** - Games and lunch for 1 or more adults and 3 or more children.

**\$15 Carnival Pass** - Games and lunch for 1 person or child.

Individual tickets for games and food items will be available at the door.

# For Children

## SUNDAY MORNING FAMILY SERVICES

11 a.m. - 12 p.m.

- February 7:** Family Torah Service  
**February 28:** Purim Celebration followed by the Purim Carnival  
**May 9:** Mother's Day  
**May 23:** Confirmation

## TOT SHABBAT

The Young Families Club, together with the Preschool, has planned Tot Shabbats for families with children ages 5 and under. This is a wonderful opportunity to introduce your children to the Temple and to meet other families! Tot Shabbat begins with a brief worship service conducted by one of our Rabbis at 5:30 p.m. followed by dinner and entertainment for the children. Tot Shabbat will be held on the following Friday evenings: **February 19, March 19, April 16 and May 21.**

Reservations are required so please call the Temple office and let us know the number of adults and children in your party. The cost is \$20 per family for Temple members and \$25 per family for non-members.

## FRIDAY NIGHT LIVE FOR KIDS OVER FIVE

For children over the age of 5 but under the age of 10, **join us for this special program.** Mark your calendar to come to Sinai on **March 12** for a brief worship service conducted by one of our Rabbis followed by a special event in the social hall. So watch the Bulletin and our web site, [www.chicagosinai.org](http://www.chicagosinai.org).

Reservations are required so please call the Temple office and let us know the number of adults and children in your party. The cost is \$20 per family for Temple members and \$25 per family for non-members.

## SINAI PRESCHOOL

Please join us on **February 9 and 23 at 9:15 a.m.** for an Open House/Tour to learn more about the preschool.

Interested families please contact Rochelle Friedman at: 312.867.7010 or [rfriedman@chicagosinai.org](mailto:rfriedman@chicagosinai.org).

Sinai Preschool is a **NAEYC accredited preschool** serving families with children 26 months to 5 years of age. Additionally, we offer **Parent/Tot classes** for families with young children 12 to 26 months. **Afternoon Enrichment classes** are also available. We provide a developmentally appropriate and emotionally supportive learning environment where the needs of the individual child as well as the group are met. The program is relationship-based where young children learn to explore through play.

# Save the Date!

# TEMPLE Passover Seder

**Tuesday evening  
March 30, 2010  
6:30 PM**

# Congregational Passover Seder

Conducted by  
Rabbi Michael P. Sternfield  
and Rabbi David L. Levinsky  
with the Sinai Choir

MATZAH **Maror** Charoset

Temple Office 312.867.7000  
[www.chicagosinai.org](http://www.chicagosinai.org)

## VOLUNTEER OPPORTUNITY

This Purim, celebrate the tradition of *mishloach manot*, giving gifts to friends, by joining with others to help deliver food packages for ARK clients. Volunteer drivers are needed to deliver Purim food packages to needy families and individuals in Chicago and the Northern Suburbs. Volunteers must have cars to make deliveries. The ARK is a social service agency whose mission is to provide quality medical, dental, pharmacy and food pantry services to the less fortunate of the Jewish community.

Deliveries will be on **Sunday, February 28, 2010 at 8:30 a.m., 9:00 a.m. and 9:30 a.m.** For more information or to volunteer, please contact Bonnie Azose at 773.973.1000 or [bazose@arkchicago.org](mailto:bazose@arkchicago.org).

## SAVE THE DATE!

Mitzvah Weekend: **April 23 to 25**

Mitzvah Committee Meeting: **February 17**

For more information contact:

[socialaction.dlieberman@chicagosinai.org](mailto:socialaction.dlieberman@chicagosinai.org)

## ENVIRONMENT COMMITTEE

The Environment Committee will meet again at Sinai on **Thursday, February 25 from 6:00 to 7:30 p.m.** Please plan to attend even if you could not make the January meeting. The purpose of this meeting is to plan the startup of specific activities, including ways of reaching the broader membership with environmental information. If you are interested in working on environmental activities at Sinai, please contact Mike Wapner at [mikewapner@aol.com](mailto:mikewapner@aol.com).

## HEALTHCARE COMMITTEE

The Healthcare Committee met on January 6, with members of the Coalition to Save our Mental Health Centers. There are three important ways Sinai can help right now:

1. If you or someone you know is an attorney who would like to help draft a bill based on the prior one and on the ordinance introduced to City Council – we could use your help.
2. If you are a mental health professional or experienced organizational board member we are looking for people to help develop the “service provider” entity, including such tasks as establishing the service delivery model, preliminary budgets and contacts with area mental health training programs.
3. We are looking for assistance so that we can tell the story to a wider audience. If you are a public relations professional or have media/journalist contacts – we need your help.

Please contact Ellyn Daniels at [Dr.EllynDaniels@rcn.com](mailto:Dr.EllynDaniels@rcn.com) as soon as possible if you would like to help!

## HOLIDAY TOY DRIVE UPDATE

Thank you to for your generous donations to our Holiday Toy Drive. The gifts were delivered to children at Jewish Child and Family Services and Christopher House. Both organizations were extremely appreciative to be recipients of the items carefully selected by our congregants.

## JENNER SCHOOL - SINAI SCHOOLS INITIATIVE UPDATE

The response to our initiative for Jenner has been nothing short of astounding! We have had interest from over 100 members of Sinai. Over thirty members volunteer on a weekly basis, either as reading and math tutors, or as half-day classroom aides. A great number of members have opened their hearts and their checkbooks to provide for the needs of the Jenner student body, 100% of whom live below the poverty line.

Through the generous contributions of Sinai members, we have been able to provide a much needed and much appreciated second school uniform to every Jenner Student. Instead of toys and games, the request was made to provide as many school and gym uniforms as possible since most of the 500 students at Jenner were getting-by with only one uniform, some badly worn. Now every student can come dressed appropriately for school in clean clothes.

We are continuing our efforts at Jenner, and we continue to need tutors and classroom aides. We also hope to fund additional projects, including an extension of the science curriculum we sponsor, the opportunity for each and every Jenner student to attend one field trip this school year, and to pay for miscellaneous needs, such as the 500 composition notebooks we recently purchased or the graphing calculators we purchased for the 7th and 8th grade students! We invite you to make a contribution of any amount payable to Chicago Sinai and marked Jenner Fund in the memo section.

Our Sinai community is making Jenner a better school, contributing to the raising of test scores and school resources. We are truly appreciated by the students and staff of the Jenner School. For more information and to become involved with Jenner School, located at Cleveland and Division, please email Jill Peters [jillpeters@rcn.com](mailto:jillpeters@rcn.com) or Mike Mannis [mmannis@aol.com](mailto:mmannis@aol.com) for more information.

# Nominating Committee Begins Search

The Nominating Committee is soliciting suggestions from the Congregation for potential Board of Trustees members.

Board Members play an active role in the lay leadership of the Congregation. They participate fully in the life of the Congregation, attending services and events, working on committees and going to monthly Board of Trustees meetings. Some Board members have been members of Sinai for many years and others for only a few.

Anyone who is proposed to the Nominating Committee will be contacted before being considered for nomination. In this way the Nominating Committee will have a better understanding of the qualifications and interest level of possible Board of Trustee members. Being proposed and contacted for nomination to the Board does not insure being slated and elected to the Board. The Nominating Committee will draw from a large pool of members and will put together a slate That will make the Board of Trustees representative of the Congregation.

The election of Trustees and officers slated by the Nominating Committee will be decided by a majority vote of the members in good standing present at the Annual Meeting in June. The slate will be presented to the Congregation prior to the Annual Meeting.

Please think about members who would serve well in this capacity. Being on the Board is both an honor and an obligation. It involves working on behalf of the Congregation and receiving the satisfaction of participating more fully in our community. You may put forth your own name or that of someone else.

Please get involved at Sinai; participate in this process. Return this form,  
Attn: Nominating Committee, to the Temple office, by mail or fax no later than **February 26, 2010**.

I, \_\_\_\_\_

would like to serve on the Board of Trustees for the following reasons:

---

---

---

---

I would like to recommend: \_\_\_\_\_

as a potential member of the Board of Trustees for the following reasons:

---

---

---

---

Please remove this form and mail or fax it to 312.867.7006 by **February 26, 2010**.

**Chicago Sinai Congregation**  
Attn: Nominating Committee  
15 W. Delaware Place  
Chicago, Illinois 60610  
  
Fax 312.867.7006

# Frequently Asked Questions

We often hear from members who are unsure of whom to contact for information about events at Sinai. The following is a list which we hope you will find helpful:

**Adult Education & Religious School:**

Heidi Kon, Director of Religious Education, Extension 243

**Preschool:**

Rochelle Friedman, Preschool Director, Extension 231

**Sinai Music/Volunteer Choir:**

Scott Kumer, Director of Music, Extension 239

**Rabbi's Assistant:**

Dee Dee Dukes, Extension 229

**Oneg Sponsorship:**

Dawn Owens, Extension 223

**Membership & Member Accounts:**

Jill Epstein, Extension 225

**Yahrzeits & Book of Remembrance:**

Dee Dee Dukes, Extension 229

**Tributes:**

Chelsea Devantez, Extension 221

**Memorial Plaques:**

Jill Epstein, Extension 225

**Life Cycle Events:**

Susan Solomon, Extension 226

**Facility Rental:**

Dawn Owens, Extension 223

**Social Action/Volunteer Activities:**

Dawn Lieberman, Extension 224

**For all other questions please contact Susan Solomon, our Executive Director at 312.867.7000 or 312.944.1236.**

**NEW OFFICE HOURS**

Please note that the Temple office will be open from 9 a.m. to 5 p.m. Monday through Friday and from 9 a.m. to 1 p.m. on Sunday. The receptionist will answer the phones from **10 a.m. to 4 p.m. Monday through Thursday**, from **9 a.m. to 1 p.m. on Friday** and from **9 a.m. to 1 p.m. on Sunday**.

At all other times please leave a message on our general voice mail and someone will return your call. If you are calling about an emergency, such as a serious illness or a death in the family, please call Susan Solomon at 312.944.1236, Rabbi Sternfield at 312.520.3358 or Rabbi Levinsky at 312.401.7559.

**PARKING INFORMATION**

Discounted parking is available at the following self-park garages:

**Potash Garage**

1 East Delaware, located on Chestnut just west of Wabash  
Rate: \$12 for 12 hours

**One West Superior**

Rate: \$9 for 3 hours

**900 North Michigan Avenue** (Bloomingdales Building)

Rate: Monday to Saturday until 5 p.m.,

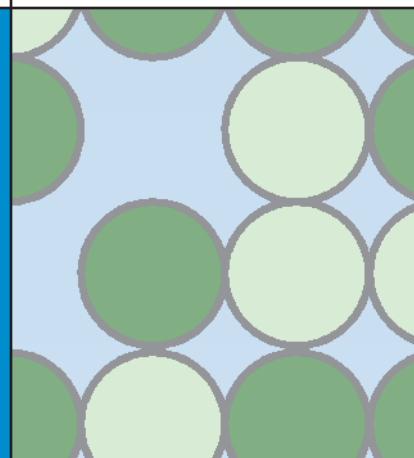
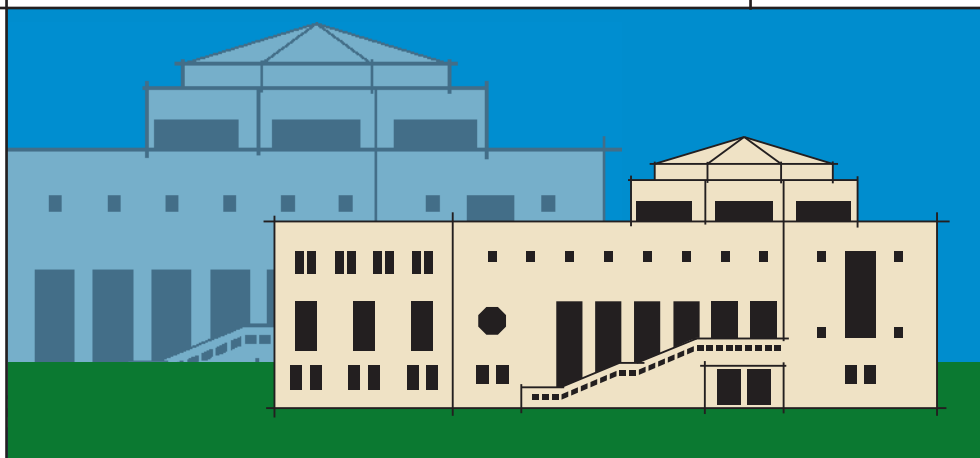
\$12 for 3 hours only

Sundays from 6 a.m. to 4:45 p.m., \$7.75

**Validation tickets are available at the Temple office.**

**TRIBUTE FUNDS**

The Tribute Funds of Chicago Sinai Congregation make it possible to support a number of special programs in the Temple and the community, while providing means for individuals to honor or remember their loved ones. All contributions are recognized with either a card or letter. You may also wish to consider donating the pulpit flowers for a weekend as a way of honoring a special occasion or remembering a loved one. Please call the Temple office, 312.867.7000, for further information



# Sinai Committees

# Sinai Lay Leadership

Joining one of our committees is a great way to get to know Temple members and to do important work on behalf of Sinai. To join a committee contact the committee chairs listed below.

## Adult Education

Anna Baluyot 773.772.5265  
[anna.baluyot@comcast.net](mailto:anna.baluyot@comcast.net)

## Art & Judaica

Vicki Samuels 312.664.7160  
[vwoolner@mac.com](mailto:vwoolner@mac.com)

## Care

Henry Nussbaum  
312.337.4177  
[HenryNussbaum@ismie.com](mailto:HenryNussbaum@ismie.com)

## Celebration 2010

Michael Mannis  
847.234.0060  
[mmannis@aol.com](mailto:mmannis@aol.com)

## Finance

Alan Tinsmon 312.440-8683  
[atinsmon@kapfam.com](mailto:atinsmon@kapfam.com)

## House

Bruce Miller 773.782.8277  
[bruce.miller@am.jill.com](mailto:bruce.miller@am.jill.com)

## Interfaith

Ed Traisman 847.570.9257  
[basetrais@comcast.net](mailto:basetrais@comcast.net)  
Peter Rubnitz 773.832.1777  
[peter@urbanoasis.biz](mailto:peter@urbanoasis.biz)

## Library

Judy Genesen 312.642.8341  
[lgenesen@aol.com](mailto:lgenesen@aol.com)

## Membership

Susan Stone 312.645.1913  
[skstone07@sbcglobal.net](mailto:skstone07@sbcglobal.net)

## Music

Edwin Eisendrath  
773.342.2843  
[eisendrath@comcast.net](mailto:eisendrath@comcast.net)

## 150th Anniversary

Bill Marks 312.337.8323  
[whmarks@sbcglobal.net](mailto:whmarks@sbcglobal.net)  
Andrea Kinnear  
773.525.3585  
[akinnear@alumni.northwestern.edu](mailto:akinnear@alumni.northwestern.edu)

## Planned Giving

Peter Bensinger  
773.929.5927  
[peter.bensinger@bartlit-beck.com](mailto:peter.bensinger@bartlit-beck.com)

## Religious School

Sarah Putrim  
773.509.1210  
[putrim@sbcglobal.net](mailto:putrim@sbcglobal.net)

## Social Action

Carol Yanowitz  
773.782.8277  
[carolyano@sbcglobal.net](mailto:carolyano@sbcglobal.net)

## Advocacy

Ann Courter 708.524.8554  
[courhir@comcast.net](mailto:courhir@comcast.net)

## Community Concerns

Shelley Stern Grach  
312.337.3919  
[sstern@microsoft.com](mailto:sstern@microsoft.com)

## Environment

Michael Wapner  
847.318.9255  
[mikewapner@aol.com](mailto:mikewapner@aol.com)

## Healthcare

Ellyn Daniels  
312.944.0058  
[dr.ellyndaniels@rcn.com](mailto:dr.ellyndaniels@rcn.com)

## Mitzvah

Carol Yanowitz  
773.782.8277  
[carolyano@sbcglobal.net](mailto:carolyano@sbcglobal.net)

## Sinai Schools Initiative

Michael Mannis  
847.234.0060  
[mmannis@aol.com](mailto:mmannis@aol.com)  
Jill Peters 773.248.8768  
[jillpeters@rcn.com](mailto:jillpeters@rcn.com)

## Young Professionals

Carrie Baker  
312.343.1759  
[carrieeebaker@gmail.com](mailto:carrieeebaker@gmail.com)  
Sarah Samuels  
312.310.7160  
[sarah.samuels@gmail.com](mailto:sarah.samuels@gmail.com)

## Young Families

Andrea Kinnear  
773.525.3585  
[akinnear@alumni.northwestern.edu](mailto:akinnear@alumni.northwestern.edu)

## Executive Committee:

Peter B. Bensinger, Jr.,  
*President*  
Norman Hirsch,  
*Vice President*  
Andrea Kinnear,  
*Vice President*  
William Marks,  
*Vice President*  
Susan Stone,  
*Vice President*  
Ellyn Daniels,  
*Secretary*  
Alan Tinsmon,  
*Treasurer*

## Board of Trustees:

Floyd Abramson  
Anna Baluyot  
Jeffrey Becker  
Peter B. Bensinger, Jr.  
Hart Billings  
Hillery Chakos  
Ellyn Daniels  
Merilee Elliott  
Shelley Stern Grach  
Norman Hirsch  
Raymond Hodgdon  
Robert Hoyt  
Kate Kestnbaum  
Andrea Kinnear  
Elaine Koenigsberg  
Richard Letchinger  
Dana Levenson  
Michael Mannis  
William Marks  
Lynn Metz  
Bruce Miller  
Henry Nussbaum  
Sarah Putrim  
Peter Rubnitz  
Thomas Samuels  
Larry Schor  
Jayne Schreiber  
Michele Smith  
Sally Spritz  
Susan Stone  
David Tabolt  
Howard Tanzman  
John Tingley  
Alan Tinsmon  
Vicki Turoff  
Michael Wapner

## Life Trustees

Myra Cohen  
James Deutelbaum  
Etha Bea Fox

## Past Presidents

Donna Barrows  
Joan H. Epstein  
Henry Freund  
Alec Harris  
Stanley Jarrow  
Miriam Letchinger  
Victoria Woolner Samuels  
Mark Segal  
Bruce Stern  
Errol Stone  
Howard Sulkin  
Jack D. Tovin

# Religious Education

**On February 28, we will celebrate Purim in our usual wacky and fun way—this year our Purim Spiel will be “Grease: The Megillah”.** This is a great time to review a bit of background on this minor holiday and why celebrate it in such a crazy fashion.

The story of Purim is found in the Book of Esther in the Bible. Esther is a young Jewish woman who lives in Persia with her cousin Mordecai. Esther was made queen by Ahasuarus, King of Persia, but he did not know he was Jewish.

The villain of the story is Haman, advisor to the king. When Mordecai refuses to bow down to Haman, Haman plots to kill all the Jews. Mordecai persuades Esther to risk her own life, by speaking to the King on behalf of the Jewish people. When she told him of Haman’s plot to kill the Jews and that she was a Jew, the Jewish people were saved.

The word “purim” means “lots”, referring to the lots that were drawn in order to determine the day on which all the Jews would be killed. The Purim delicacy, hamantashen, is a triangular cookie, with a poppy seed or fruit filling. It comes from the German name, "mohntaschen" ["poppy-seed pockets"]. The Hamantaschen are supposed to represent Haman’s three-cornered hat.

Most non-Orthodox Jewish scholars are of the opinion that Esther is fictional. Yet Purim evolved into an important holiday. Jews surrounded by anti-semitism, took great joy in a holiday that reminded them that the anti-semites didn't always win. Does it make sense to celebrate the anniversary of events we believe are fictional? Even though the "Haman" of the story is likely fictional, there have been too many real-life "Hamans" during the course of Jewish history. History has made the story relevant and compelling, even if it is not true.

Purim is celebrated by poking fun at ourselves, throwing synagogue decorum out the window, dressing in costume, and general silliness. Purim is the holiday that proves Judaism has a sense of humor.

Sinai’s service is very child-friendly. Costumes are encouraged for children and adults . We will interrupt the service with noisemakers (groggers) at the mention of Haman’s name. **Our professional, volunteer and children’s choirs will provide an amazing rendition of “Grease: The Megillah”.**

The service is always followed by a fabulous and fun **Purim Carnival**. Games, prizes, moonwalk (weather permitting) and food are all part of the festivities. A special feature at

Sinai’s carnivals is always our Mitzvah Day Table, where we are reminded that even amidst the silliness, we always have an obligation to help our community.

So plan to come to our Purim Spiel on **February 28 at 11 a.m.** and stay for lunch and the carnival. At the same time, learn about Mitzvah Day (April 25) and what you can do to help!

B'Shalom,

Heidi Kon,  
Director of  
Religious Education



*Want to know what your child's teacher is doing in class on Wednesdays or Sundays? Go to <http://chicagosinai.shutterfly.com> to select your child's classroom and be taken to a detailed page of information specific to each class. If you forgot the password to these password-protected sites, email [hkon@chicagosinai.org](mailto:hkon@chicagosinai.org).*

**Dear Temple Family,**

*We are blessed to have  
so many of you as our friends.  
You are invited to join us as our son*

**Noah Jones**  
*becomes a Bar Mitzvah on*  
**Saturday February 13, 2010**  
**at 10:30 a.m.**

*Heidi Kon and Will Jones*

A congregational Kiddush reception will follow the service in the Temple Social hall.

Please R.S.V.P. to the  
Temple Office at 312.867.7000  
**No gifts, please.**

# Preschool

Accredited by NAEYC's  
National Academy of  
Early Childhood Programs



Dear Sinai Families,

Thanks to Rabbi Michael Sternfield for making our December 9th preschool Chanukah celebrations, both morning and afternoon, so special. More than 100 preschool family members joined us for the lighting of the menorah, songs, latkes and family fun!



## Save the Date:

**Sinai Preschool  
Roll out of Bed Pajama Party  
Sunday, February 7, 9:00 to 10:30 AM**

- Bounce Houses
- Tattoos
- Lollipop Pull
- And More!

Please join us for a morning of food and fun!  
The cost per family is \$30.00 in advance and  
\$35.00 at the door.

Fundraiser to support the Scholarship and Capital  
Improvement Fund.  
RSVP to Becca Goering at 312.867.7011.

Hope to see you there!

Sincerely,  
Rochelle Friedman

# In the Lives of our Congregants

## CONGRATULATIONS TO

*Heather and Wilfredo Cintron  
on the naming of their son Leonidas*

*Richard Gordon and Elizabeth Stein  
on the occasion of their wedding*

*Dan Silverstein and Carol Crownover  
on the occasion of their wedding*

*Tatum McCormick  
Daughter of Janis and Tom McCormick  
on becoming a Bat Mitzvah*

*Noah Jones  
Son of Heidi Kon and Will Jones  
on becoming a Bar Mitzvah*

*Sam Adams  
Son of Craig Adams, Kimberly Weiner and Rick Levin  
on becoming a Bar Mitzvah*

*Ashley Cicurel  
Daughter of Teri and Cary Cicurel  
on becoming a Bat Mitzvah*

## WE RECORD WITH SORROW THE DEATH OF OUR MEMBERS

*Paulette Markoff, Mother of Terry Savage  
Thomas E. Riggs, Son-in-law of Hope R. Hirschman  
Harold (Bud) Aronson, Jr., Husband of Jeanne Aronson  
Maxine Kaplan, Sister of Laurence Kaplan  
Leona Merker, Mother of Elliott Merker  
Cathy Geisenheimer Stang,  
Daughter of Ruth and Ed Geisenheimer  
Henry Greilsheim, husband of Louise Greilsheim  
Phyllis Zaideman, sister of Michael (Marsha) Spak*

## PULPIT FLOWER DONATIONS

*Janis and Tom McCormick  
In honor of the Bat Mitzvah of Tatum McCormick*

*Craig Adams, Kimberly Weiner and Rick Levin  
In honor of the Bar Mitzvah of Sam Adams*

## ONEG SPONSORS

*Beth Kon  
In honor the Bar Mitzvah of her Grandson Noah Jones*



## TEMPLE FUND

***In memory of Arthur Levin***

Jerry Dreyfuss and Beverly Goldberg

***In memory of George Hirsh***

Estelle and Edward Arvey  
Jerry Dreyfuss and Beverly Goldberg  
Bobette Naiburg

***In memory of Joan Blutter***

Jerry Dreyfuss and Beverly Goldberg

***In memory of Henry Greilsheim***

Ruth Beck  
Marjorie Biederman  
Jim and Polly Deutelbaum  
Joyce Himmel

***In memory of Caryl Block***

Joyce and Gary Stetson

***In memory of Augusta F. Littmann***

Myra L. Cohen

***In honor of Henry Nussbaum's special birthday***

Nancy Friedland and Peter J. Regan

***In honor of Herb Hyman's birthday***

Nancy Sacks

***In honor of the marriage of Mr. and Mrs. Peter's son,***

***Bob Peters***

Ruth Beck

***In memory of Harold Aronson***

Andrew Weil

***In memory of Maxine Philipsborn***

Barbara and Bruce Schimberg

***In memory of Cathy Geisenheimer Stang***

Benjamin and Gloria Golden

***In memory Thomas Smith***

Charlene Landsberg Smith

***In memory of Shirley Saltzman***

Doris Jean Keller

***In memory Dr. Robert Southard***

Edna Carter Southard

## RELIGIOUS SCHOOL

***In honor of Heidi Kon***

Lisa and David Burik

## SINAI SCHOOL INITIATIVE: JENNER SCHOOL

***In honor of Henry Peter's Bar Mitzvah***

Leslie Bodenstein  
Carol Dishell-Smith  
Joshua and Marianne Mintz  
Mathias and Ingeborg Mond  
Walter and Shelley Rice  
David and Chereilyn Riesmeyer  
Leslie Smith and Michael Uzer  
Dorothy and Eric Wolf

***In honor of Lily Schaer's Bat Mitzvah***

Alexander Harris and Carollina Song

## RABBI STERNFIELD'S DISCRETIONARY FUND

***In honor of the birth of their daughter,***

***Sadie Zipporah Cohen***

Greg and Rebecca Cohen

***In honor of Rabbi Sternfield***

Estelle and Edward Arvey  
Lisa and David Burik  
Bobette Naiburg

***In honor of Zoe's Bat Mitzvah***

Shira Saville

***In memory Jacob Hadesman***

Carolyn Hadesman

## MUSIC FUND

***In memory of Cathy Geisenheimer Stang***

Brett A. August and Dr. Carey Z. Augus  
Helaine and Arthur Billings  
Philip and Eileen Hoffman  
Lawrence Abrams and Beatrice Muchman  
Susan and Errol Stone  
Vicki and Michael Turoff

***In memory of Jennie L. Hoffman and***

***Pauline Fine Tzinberg***

Philip and Eileen Hoffman

***In memory of Dorothy Kumer***

Vicki and Michael Turoff

***In memory of George Hirsh***

Alice and John Strauss

## FUND TO ASSIST THE DISABLED

***In memory of Cass Goldberg***

Ellen Goldberg

Sunday	Monday	Tuesday	Wednesday	Thursday	Friday	Saturday
	<b>1</b> 10:00am CJE at Sinai	<b>2</b>	<b>3</b> 7:30am Weekday Worship Service 8:00am Adult Ed: Rashi Class 4:00pm RS 6:30pm Bridge II	<b>4</b> 10:00am CJE at Sinai 12:00pm Adult Ed: Judges 1:00pm Beginning Bridge I 7:00pm Intro to Judaism 7:00pm Film Review	<b>5</b> 6:15pm Shabbat Service (Oneg)	<b>6</b> 10:00am Torah Study 10:30am Tatum McCormick Bat Mitzvah
<b>7</b> 9:00am Preschool Pajama Party 9:45am Adult Ed 10:00am RS 11:00am Family Torah Service 12:30pm Confirmation Class	<b>8</b> 10:00am CJE at Sinai 10:15am Movie Group 3:30pm Fourth Church Dinner	<b>9</b> 9:15am Preschool Open House 3:00pm Book Group	<b>10</b> 7:30am Weekday Worship Service 8:00am Adult Ed: Rashi Class 4:00pm RS 6:30pm Bridge II	<b>11</b> 10:00am CJE at Sinai 12:00pm Adult Ed: Judges 1:00pm Beginning Bridge I 7:00pm Intro to Judaism	<b>12</b> 6:15pm Shabbat Service (Oneg)	<b>13</b> 10:00am Torah Study 10:30am Noah Jones Bar Mitzvah
<b>14</b> NO CONFIRMATION NO RS 9:45am Adult Ed 10:00am Lunch Program: Bring Bag Lunches 11:00am Sundays at Sinai	<b>15</b> OFFICE CLOSED PRESIDENT'S DAY	<b>16</b>	<b>17</b> 7:30am Weekday Worship Service 8:00am Adult Ed: Rashi Class 4:00pm RS 6:00pm Dinner & Film 6:30pm Bridge II	<b>18</b> 10:00am CJE at Sinai 12:00pm Adult Ed: Judges 1:00pm Beginning Bridge I 6:00pm Linus Blanket Project 7:00pm Intro to Judaism-Last Class	<b>19</b> 5:30pm Tot Shabbat 6:15pm Shabbat Service (Oneg)	<b>20</b> 10:00am Torah Study 10:30am Sam Adams Bar Mitzvah
<b>21</b> 9:45am Adult Ed 10:00am RS 11:00am Sundays at Sinai Torah Service 12:30pm Confirmation Class 12:30pm Outreach 12:30 Sunday Book Review 2:00pm Sunday Supper at Fourth	<b>22</b> 10:00am CJE at Sinai	<b>23</b> 9:15am Preschool Open House	<b>24</b> 7:30am Weekday Worship Service 8:00am Adult Ed: Rashi Class 4:00pm RS 6:30pm Bridge II	<b>25</b> 10:00am CJE at Sinai 12:00pm Adult Ed: Judges 1:00pm Beginning Bridge I	<b>26</b> NOMINATING COMMITTEE FORMS DUE 6:15pm Shabbat Service (Oneg)	<b>27</b> 10:00am Torah Study 10:30am Ashley Cicurel Bat Mitzvah
<b>28</b> 9:45am Adult Ed 11:00am Family Purim Service & Carnival						

# Save the Date

# MITZVAH WEEKEND

## APRIL 23 to 25

### Friday, April 23, 6:15 p.m., Shabbat Service and Dinner

Please join us for a very special and stimulating Mitzvah Weekend kickoff.

### Saturday, April 24, Mitzvah in the City

Please join us as we go out into the community for our Mitzvah Weekend Activities.

### Sunday, April 26, Mitzvah at Home

Everyone is welcome to join us at the Temple for family friendly activities including Kid's Crafts, Making Bag Lunches, Sorting collections and Packing Boxes for the Troops.

Help us reach-out to our community. Lend your support to the Mitzvah Weekend Committee today!

Please contact: Carol Yanowitz at [carolyano@sbcglobal.net](mailto:carolyano@sbcglobal.net).

בראשית ברא אלהים

## Chicago Sinai Congregation

15 W. Delaware Place  
Chicago, Illinois 60610  
Tel 312.867.7000  
Fax 312.867.7006  
[www.chicagosinai.org](http://www.chicagosinai.org)

Michael P. Sternfield	Senior Rabbi
David L. Levinsky	Associate Rabbi
Howard A. Berman	Rabbi Emeritus
Peter B. Bensinger, Jr.	President
Susan Solomon	Executive Director
Scott Kumer	Music Director
Heidi Kon	Education Director
Rochelle Friedman	Early Childhood Director
Susan Solomon	Bulletin Editor

Periodicals Postage Paid at Chicago, IL.

USPS 0103-880

Published monthly, except for a combined issue  
in July/August, by Chicago Sinai Congregation

POSTMASTER: Send address changes to  
CHICAGO SINAI CONGREGATION  
15 W. Delaware Place, Chicago, IL 60610